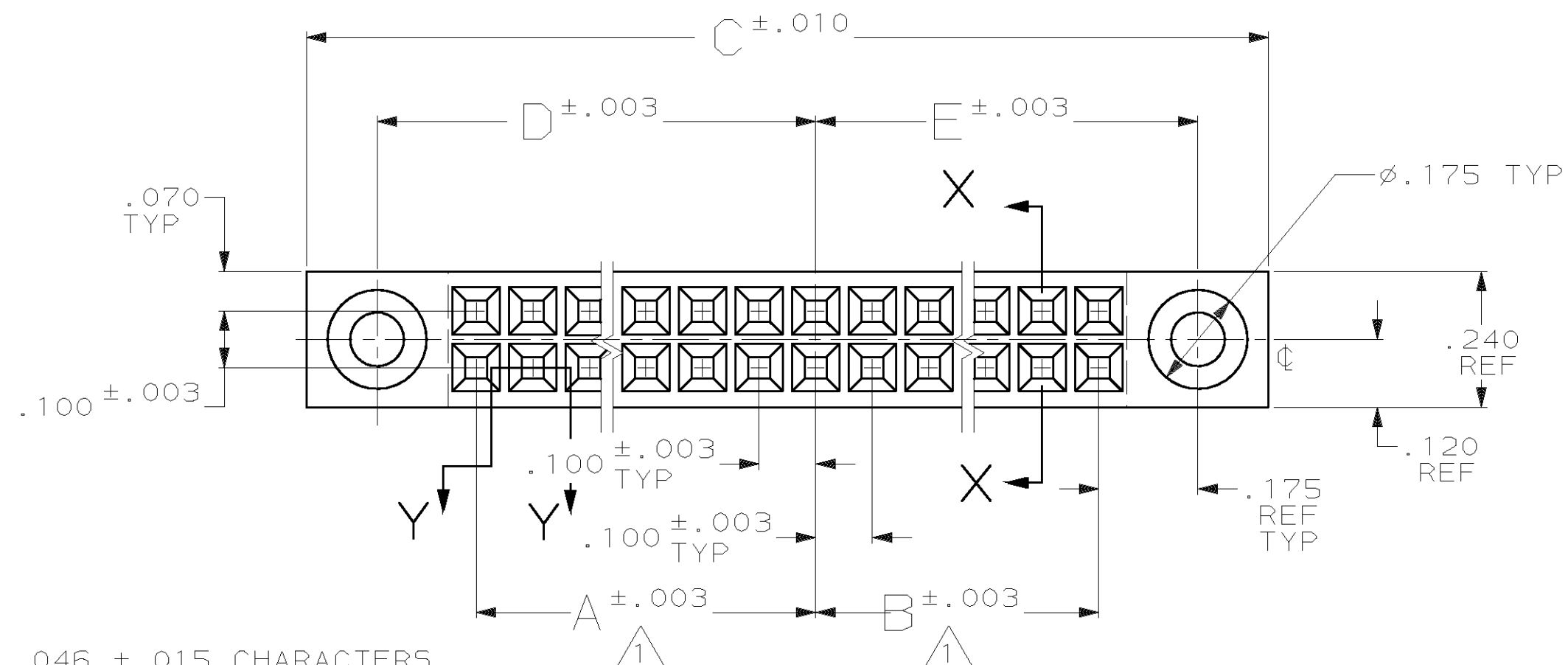


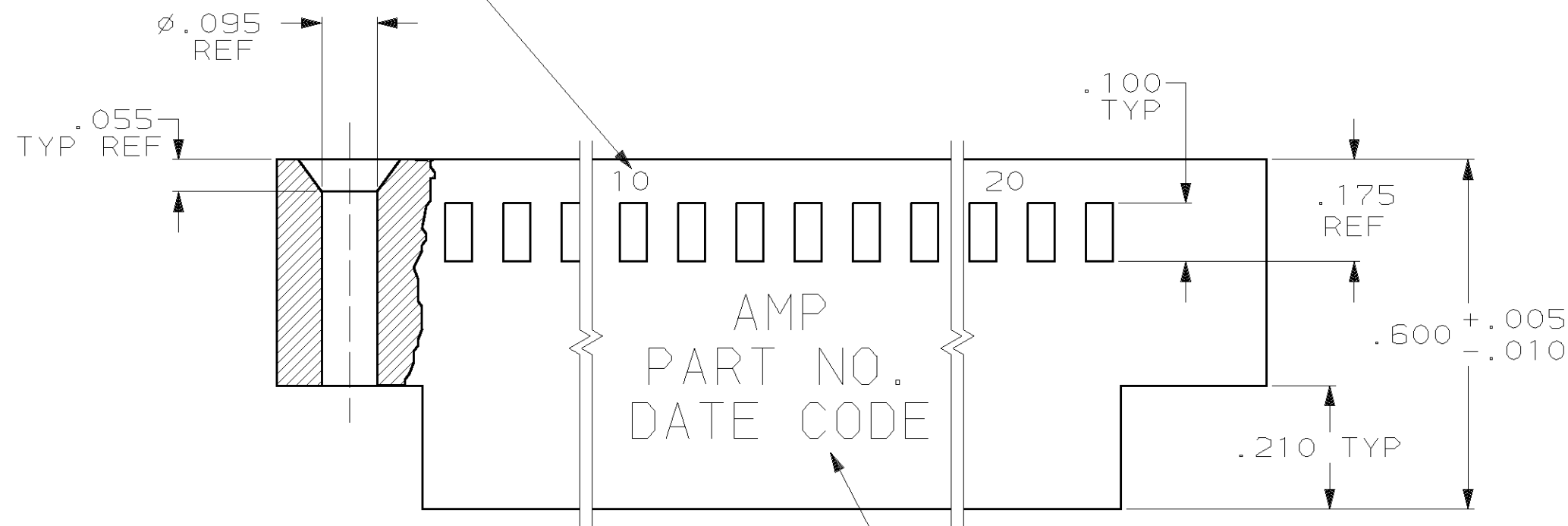
THIS DRAWING IS UNPUBLISHED. RELEASED FOR PUBLICATION .19 .  
 © COPYRIGHT 19 BY AMP INCORPORATED. ALL INTERNATIONAL RIGHTS RESERVED.

MOD	LOC	DIST	P	F	ZONE	LTR	DESCRIPTION	DATE	APPD
30	AD	39				V	REV PER 063C-0203-04	140CT04	JR/DS

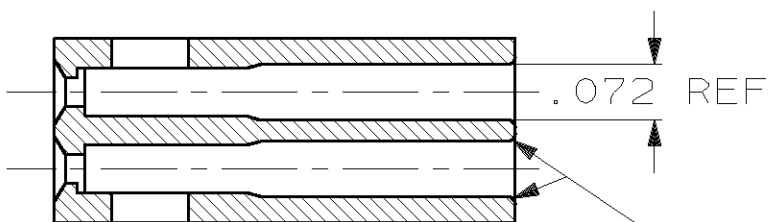
- 1 CAVITY LOCATION DIMENSIONS INCREASE IN INCREMENTS OF .100 TOLERANCE NONCUMULATIVE.
- 2. USE EXTRACTION TOOL NO. 91052-1 TO REMOVE RECP. CONTACTS.
- 3 OBSOLETE PART NUMBER.
- 4 SUPERSEDED BY 87483-9.
- 5 SUPERSEDED BY 1-87483-5.



.046 ±.015 CHARACTERS, MARKED - WHITE EVERY FIFTH CAVITY ONE SIDE

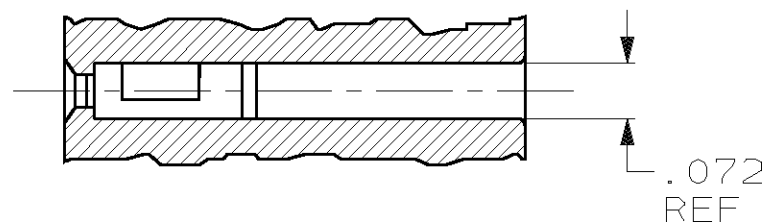


"AMP" PART NO. & DATE CODE MARKED APPROX. CENTER.



SECT X-X

R. OPTIONAL



SECT Y-Y ROTATED 90°

3	5-87483-4	1.675	1.775	3.700	1.500	1.600	64	3	5-87483-3
3	5-87483-2	1.575	1.575	3.400	1.400	1.400	58	3	5-87483-1
3	5-87483-0	1.475	1.575	3.300	1.300	1.400	56	3	4-87483-9
3	4-87483-8	1.375	1.375	3.000	1.200	1.200	50	3	4-87483-7
3	4-87483-6	1.275	1.375	2.900	1.100	1.200	48	3	4-87483-5
3	4-87483-4	1.275	1.275	2.800	1.100	1.100	46	3	4-87483-3
3	4-87483-2	1.175	1.175	2.600	1.000	1.000	42	3	4-87483-1
3	4-87483-0	1.075	1.075	2.400	.900	.900	38	3	3-87483-9
3	3-87483-8	.975	1.075	2.300	.800	.900	36	3	3-87483-7
3	3-87483-6	.975	.975	2.200	.800	.800	34	3	3-87483-5
3	3-87483-4	.875	.875	2.000	.700	.700	30	3	3-87483-3
3	3-87483-2	.775	.875	1.900	.600	.700	28	3	3-87483-1
3	3-87483-0	.675	.775	1.700	.500	.600	24	3	2-87483-9
3	2-87483-8	.675	.675	1.600	.500	.500	22	3	2-87483-7
3	2-87483-6	.575	.575	1.400	.400	.400	18	3	2-87483-5
3	2-87483-4	.475	.475	1.200	.300	.300	14	3	2-87483-3
3	2-87483-2	.375	.475	1.100	.200	.300	12	3	2-87483-1
3	2-87483-0	.375	.375	1.000	.200	.200	10	3	1-87483-9
3	1-87483-8	.275	.375	.900	.100	.200	8	3	1-87483-7
5	1-87483-6	.275	.275	.800	.100	.100	6		1-87483-5
3	1-87483-4	1.375	1.475	3.100	1.200	1.300	52	3	1-87483-3
3	1-87483-2	1.175	1.275	2.700	1.000	1.100	44	3	1-87483-1
4	1-87483-0	1.075	1.175	2.500	.900	1.000	40		87483-9
3	87483-8	.875	.975	2.100	.700	.800	32	3	87483-7
3	87483-6	.775	.775	1.800	.600	.600	26	3	87483-5
3	87483-4	.575	.675	1.500	.400	.500	20		87483-3
3	87483-2	.475	.575	1.300	.300	.400	16	3	87483-1
MARKED PART NUMBER		E	D	C	B	A	NO. OF POS.		UNMARKED PART NUMBER

DO NOT SCALE PRINT. UNLESS SPECIFIED DIMENSIONS IN MILLIMETERS TOLERANCES ON :  
 2 PLC DEC ± -  
 3 PLC DEC ± .005  
 ANGLES ± -  
 MATERIAL GLASS FILLED NYLON  
 COLOR-BLACK PER ASTM D4066  
 FINISH -

DR 12-27-89 R. SCHLAG BG  
 CHK 10-5-93 P.SREMCICH  
 APPD 10-5-93 P.SREMCICH  
 APPD 10-5-93 P.SREMCICH  
 PRODUCT SPEC -  
 APPLICATION SPEC -  
 WEIGHT -

PART NO

**AMP** AMP INCORPORATED  
 Harrisburg, Pa. 17105

NAME  
 CONNECTOR, CRIMP SNAP-IN, MOD IV, DOUBLE ROW, .100 CL, SHORT ENTRY

SIZE **C** FSCM NO 00779 DRAWING NO 87483  
 SCALE 4:1 SHEET 1 OF 1